



**BGI**  
58 Guinan St.  
Waltham, MA 02451  
V: 781.891.9380  
F: 781.891.8151

## **tetraCal® NIST Traceable Volumetric Air Flow Calibrator**

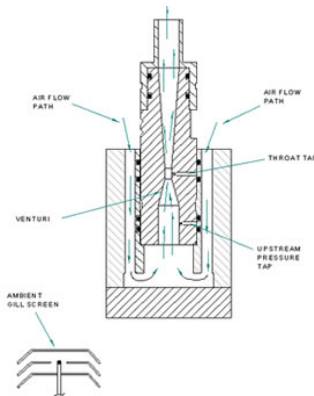


The BGI tetraCal® is a simple-to-use, NIST Traceable Standard for volumetric air flow, barometric pressure, and ambient temperature. The tetraCal® system is designed to tolerate a wide range of adverse field conditions including hot and cold temperatures as well as high relative humidity. The field portable tetraCal® is the perfect solution for calibrating environmental and industrial hygiene air sampling instruments.



tetraCal in Hard case

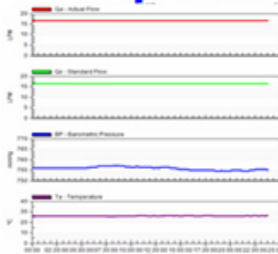
To use the tetraCal®, simply connect the tetraCal® and the sampling instrument with tubing and media, inline and turn them both ON. The tetraCal® immediately begins providing the flow rate and ambient condition data on the screen. There are no bubbles, sticking pistons or insurgent pressure spikes to worry about.



Sectional View of Measuring Section

The tetraCal® is a venturi based system with built-in compensation for changes in ambient temperature and pressure. The system is designed to be invisible to the instrument being calibrated, with no moving parts. Three Venturi are available to cover a total flow range from 0.1 to 30 Lpm.

### **BGI OpenCal**



The tetraCal® is the only field calibration device which meets the same temperature criteria as EPA designated samplers. This is a dynamic temperature range from -30° to 55° C and each kit includes software, that allows for data storage and reporting. All tetraCal® systems are built and tested at BGI headquarters which is both a NIST traceable Calibration Laboratory and an ISO 9001:2008 facility.

**BGI**  
www.bgiusa.com





## Applications

- Calibration and audits of speciation samplers to U.S. EPA requirements
- May be used on any sampler in the 0.1 to 30 Lpm range
- Usable in field or laboratory
- Suitable for calibration of cascade impactors

## Features

- Simple ON/OFF operation -- all data displayed on screen automatically
- No moving parts
- 20 hour battery life (4-AA)
- Furnished with universal power supply (120/240 VAC)
- Download feature with supplied software

## Specifications

Flow Rate Range	0.1-30 LPM (actual volumetric reading)
Temp. operational range	-30° C to 55° C
Temp. reading range	-40° C to 50° C
Baro. pressure range	400 to 800 mm of Hg (U.S. version) 534 to 1066 millibars (Euro version)
<b>Dimensions</b>	
Control Module	3.25 in. high (8.25 cm) X 3.125 in. wide (7.94 cm) X 9 in. long (22.86 cm) Height with venturi and hose adaptor 6.30 in (16.00cm)
Weight with venturi	2.38 lbs (1.08 kg)
Carrying Case	15.75 in. wide (40.00 cm) X 4.5 in. high (11.43 cm) X 12.25 in. thick (31.20 cm)
Weight complete w/contents	4.69 lbs (2.13 kg)

## Ordering Information

Part#	Description
TC5	tetraCal <sup>®</sup> , complete in fitted case
TC12	tetraCal <sup>®</sup> /EPA speciation audit model with temperature probe,
TCIMP	tetraCal <sup>®</sup> adapters (3) for use with the Improve Sampler
<b>Recalibration</b>	
TC11	Recalibration with NIST Traceability Certificate

